

FALL PROVIDER MEETING

Wednesday, October 14, 2015

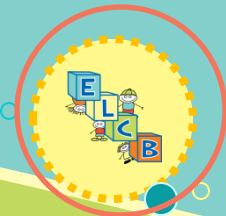
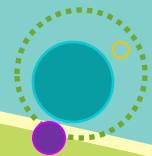
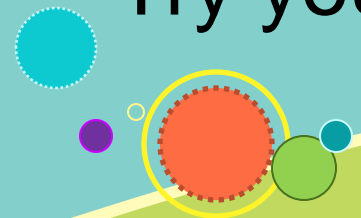


WELCOME

QAS team challenges you:

Who can complete the
Word Search
of “ELCisms”?

Try your skills to see how well you know us!



<https://www.youtube.com/watch?v=bOHaFmFX-U4>

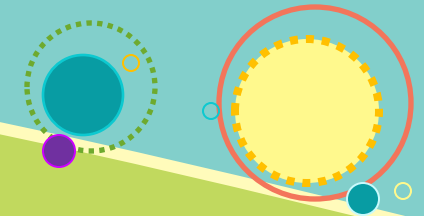
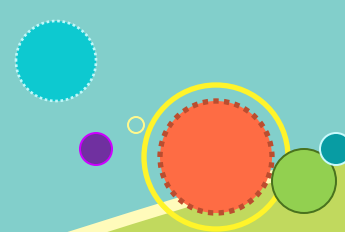


MESSAGE FROM ELC EXECUTIVE DIRECTOR

Sky Beard



THE FEDERAL PICTURE



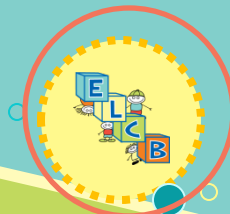
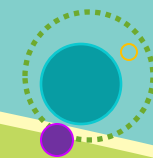
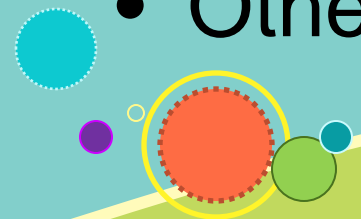
CHILD CARE DEVELOPMENT BLOCK GRANT REAUTHORIZATION

The Child Care and Development Block Grant (CCDBG) Act of 2014 reauthorizes the child care program for the first time since 1996 and represents an historic re-envisioning of the Child Care and Development Fund (CCDF) program. *(The Office of Child Care; Administration for Children and Families)*



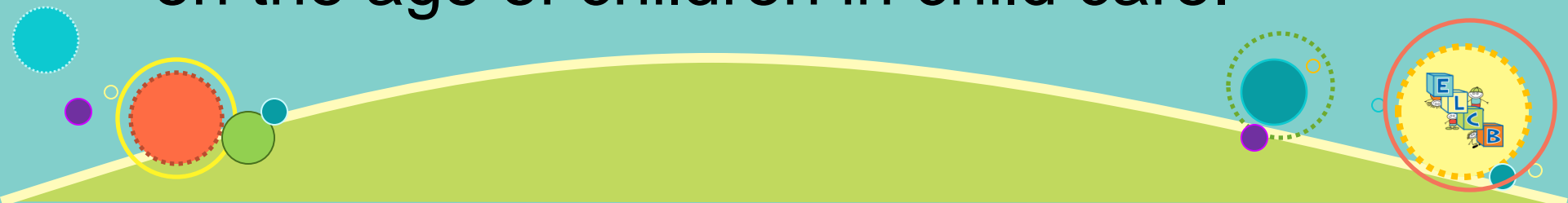
CHILD CARE DEVELOPMENT BLOCK GRANT REAUTHORIZATION

- Health and safety requirements for child care providers
- Transparent consumer and provider education information
- Family-friendly eligibility policies
- Activities to improve the quality of child care
- Other provisions



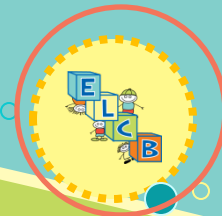
HEALTH AND SAFETY REQUIREMENTS

- Development of a broader professional development system (career ladder)
- Requires background screening (including a search of the State child abuse and neglect registry)
- Requires States to have standards for providers regarding group size limits and appropriate child-to-provider ratios based on the age of children in child care.

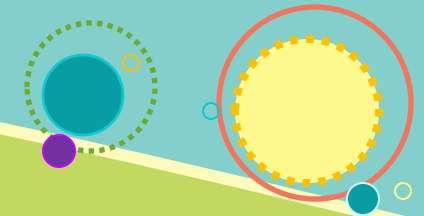
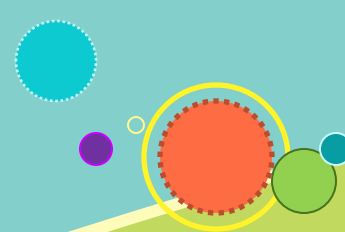


FAMILY FRIENDLY ELIGIBILITY POLICIES

- Establishes a 12-month eligibility re-determination period for all SR families, regardless of changes in income (as long as income does not exceed the federal threshold of 85% of State median income) or temporary changes in participation in work, training, or education activities.
- Allows States the option to terminate assistance prior to re-determination if a parent loses employment, however assistance must be continued for at least 3 months to allow for job search.

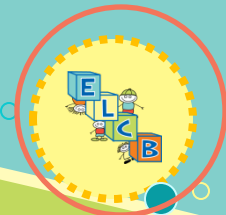
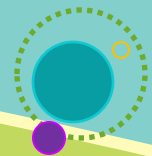
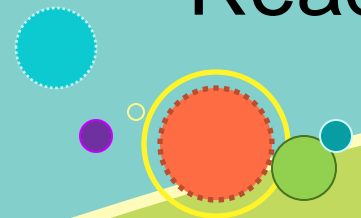


THE FLORIDA PICTURE



THE FLORIDA PICTURE

- Legislative Session starts early on January 12, 2016
- Early learning legislation may be heard in different committees this year
- Focus on health and safety, alignment with new federal requirements and quality(?)
- Focus on additional funding for School Readiness and VPK programs



THE FLORIDA PICTURE

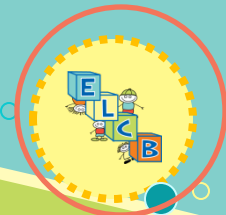
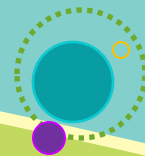
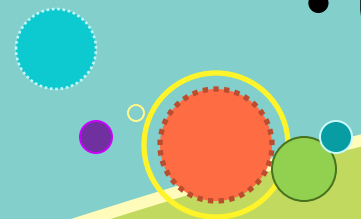
- Impact of statewide contracts
- Accountability of contract requirements and language
 - Timely attendance submission
 - Parent copays
 - Insurance
 - Monitoring



THE FLORIDA PICTURE

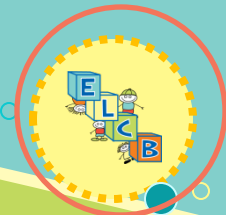
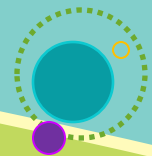
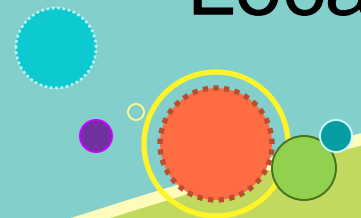
Provider Portal (Marchish 2016)

- Contract document submission
- Teacher/classroom changes
- Communication/notifications
- Online attendance
 - Daily, weekly, etc.
 - Won't allow documentation before or after eligibility dates
 - Upload of attendance documents



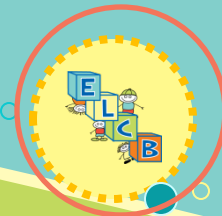
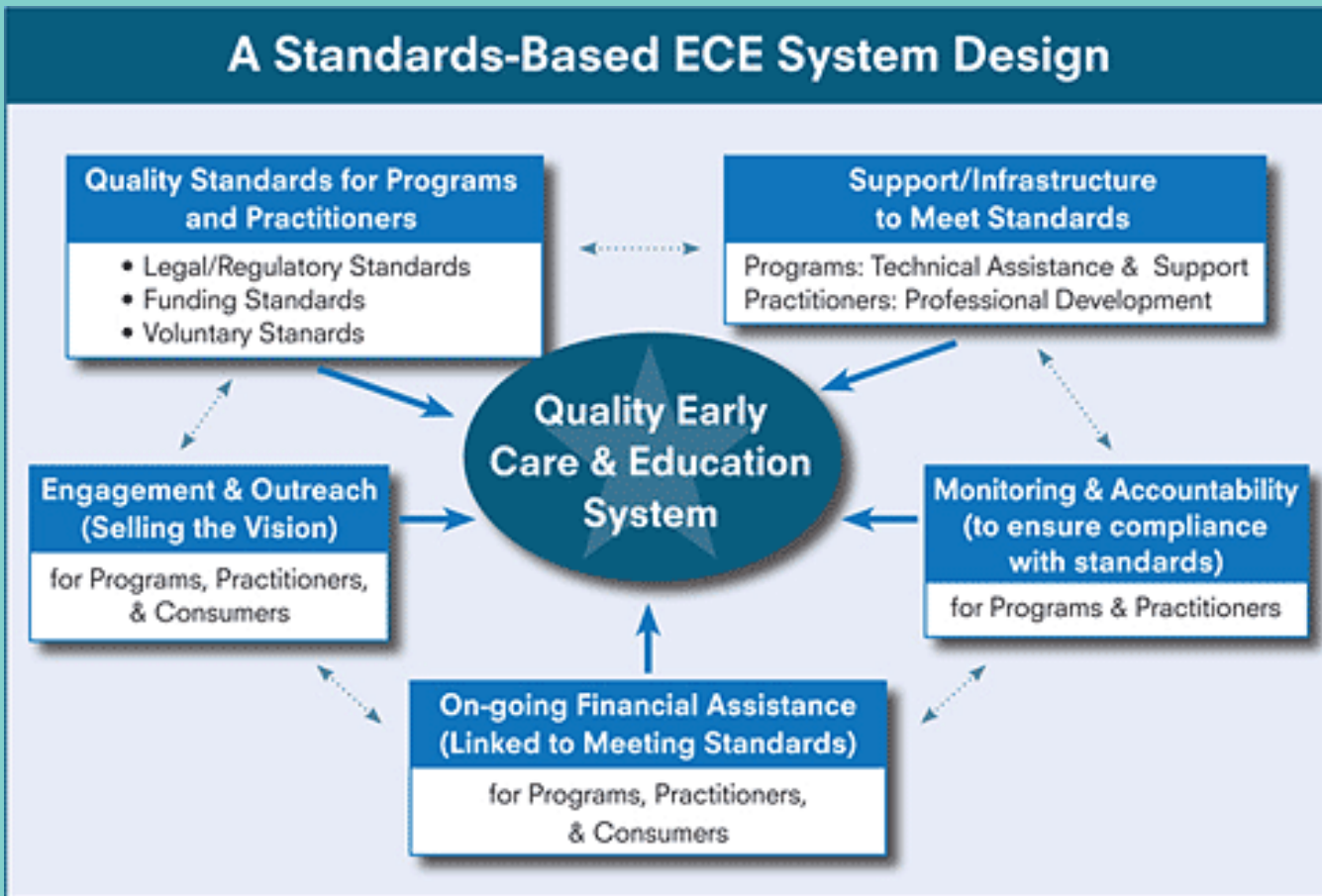
THE BREVARD PICTURE

- Managing and supporting change
 - GOLD
 - Monitoring
 - Portals
 - Contracts
- Support through technical assistance and targeted training
- Local QRIS



QUALITY RATING IMPROVEMENT SYSTEMS

A Standards-Based ECE System Design



QRIS COMPONENTS

- Program Assessment (CLASS)
- Curriculum-based Child Assessment (GOLD)
- Professional Development (Plan; progress toward a credential)



QRIS DISCUSSION

- What do you like about the concept of a local QRIS?
- What concerns you about a local QRIS?



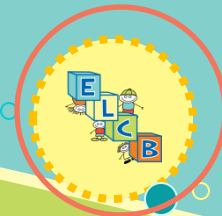
ELC & 98.5 THE BEACH 2015 TOY DRIVE

- Last year 58 families, with a total of **237 children**, benefited from 2014 Toy Drive
- This year the Fill the Truck Event will take place at The Avenue Viera near World Market on Saturday, December 12th from 12pm-4pm
- Nominations for families will be sent out at the end of November 2015



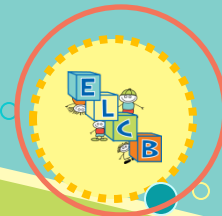
UNUSUAL INCIDENT REPORTING

- Report unusual incidents to COALITION no later than the close of business on the next business day
 - submit a written report to COALITION within three (3) business days from the date of the incident.
 - licensed providers, sending a copy of the incident report submitted for DCF to COALITION shall constitute compliance with this paragraph.
- An unusual incident is...
 - any significant event involving the health and safety of children under PROVIDER's care.
 - Accusations of abuse or neglect
 - Injury that requires professional medical attention
 - Notice of litigation



INSURANCE REQUIREMENTS

- **General Liability Insurance**
 - **Certify and maintain a general liability insurance policy**
 - minimum of \$100,000 per occurrence
 - minimum of \$300,000 aggregate
 - must name **COALITION** as a certificate holder and as an additional insured
- **Workers' Compensation**
 - When applicable (less than 4 employees not required)
 - **Certify and maintain a workers compensation insurance policy**
- **Auto Insurance**
 - When applicable
- **Notification of liability coverage changes.**
 - within 10 calendar days of cancellation or changes



MONITORING

School Readiness

- New Tool

VPK

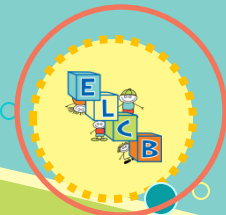
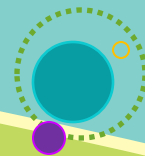
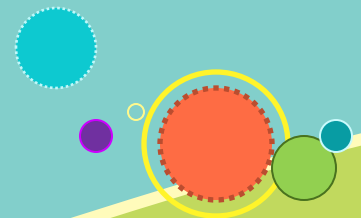
- Tool Changed

Both Tools mirror the contract

Both Tools are on our ELC website:

www.elcbrevard.org

Both Tools- review contract and tool



SCHOOL READINESS MONITORING

- Email will be sent the week before the monitoring
- Training located on our website



VPK MONITORING

- Unannounced
- New tool is more comprehensive than in the past



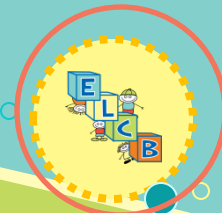
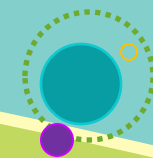
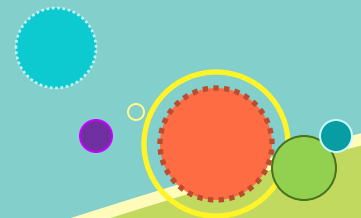
COALITION SUPPORT

What we CAN do:

- Offer technical assistance before or after monitoring
- Hand report to you upon completion of monitoring: non-compliances and CAP- 14 days

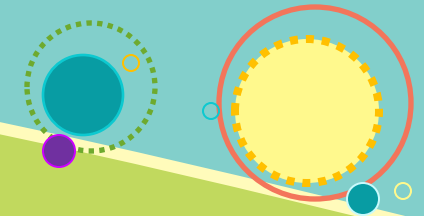
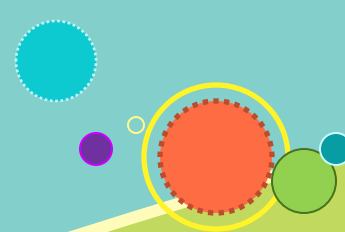
What we CAN NOT do:

- Offer technical assistance while we are monitoring
- Take requests for monitoring days



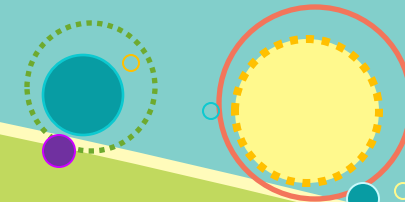
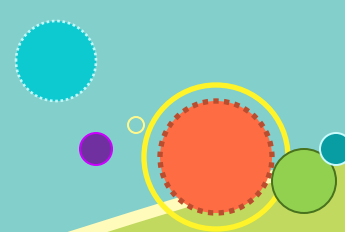
DCF LICENSING OFFICE UPDATES

Tiffani Brown



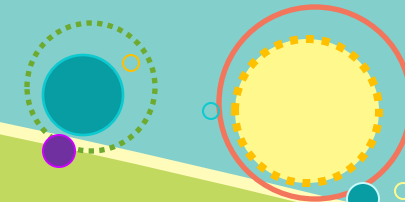
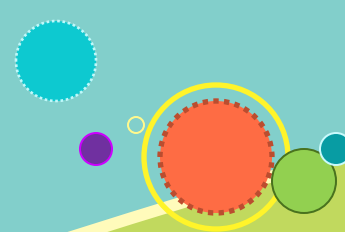
MESSAGE FROM OEL VPK REGIONAL FACILITATOR

Heather Sargent



MESSAGE FROM THE DEPARTMENT OF HEALTH

Sophia Tomadakis



SCREENING AND ASSESSMENT TEAM

Available after meeting for VPK
GOLD related questions

